

brighter[®]



PRODUCT
CATALOG
2020

Table of contents



CATALOG
ONLINE

| | |
|------------------------|---------|
| About | 4 |
| Moving heads | 6 - 25 |
| Effect & Architectural | 26 - 57 |
| Theatrical devices | 58 - 75 |
| Distribution | 76 |



| About

Brighter Lighting is a Polish, fast-growing brand of professional stage lighting, based on many years of research, experience and passion of its founders. The most important points of the brand's business strategy are the care for the quality of manufactured devices, their innovation and reliability.

Luminaires manufactured by the Brighter brand are dedicated to the stage, event companies as well as permanent installations for theatres, concert halls, television, music clubs and other entertainment spaces.

The devices produced by the company are effective luminaires with functionality and parameters that meet the requirements of each event. Brighter specializes in the production of devices with an increased IP65 resistance class, such as architectural floodlights (LED washers), strips (LED bars) and pairs (LED pars).

The brand's offer also includes intelligent devices, moving heads with modern functionalities and high parameters, as well as a whole range of theatre products, including profile illuminators and Fresnel based on LED technology.

brighter[®]

brighter



Moving heads

The product portfolio of the Brighter brand in the field of moving heads includes Beam, Spot, Wash, Hybrid and Profile devices. The vast majority of fixtures is based on LED technology.

The variety of parameters offered by mobile devices allows you to choose the perfect luminaire for each type of application. The entire product group combines advanced functionalities and parameters in a very favorable economic ratio.

brighter[®]



X-DOT
MAX

 Protection Rating
IP 65

 Light source
19x60W + 76x1W

 Effect
Dot Glow

X-Dot Max

A powerful Wash enclosed in a compact housing, which additionally enables use in difficult weather conditions. Modern RGBL chips ensure high quality of the luminous flux in the entire range of white, from cold to the warmest.

All this has been enriched with a precise zoom, a rotating lens wheel and a special Dot Glow system, which makes this device unique on the current market.

Electrical Parameters:

| | |
|---------------------------------|--|
| Maximum Power Consumption | 1500W |
| Light Source | 19x60W 4-in-1 RGBL LED +76x1W RGB Dot Glow LED |
| Estimated Light Source Lifespan | 50 000h |
| Power Supply Voltage | 100-240V, 50/60Hz |

Features and Functions:

| | |
|---|---|
| Total Lumen output | 24000lm |
| LUX | 145200 @3m (zoom narrow, RGBL) 5230 @3m (zoom wide, RGBL) |
| CRI | >79Ra |
| Colour mixing | RGBL |
| Zoom | 4°-50° |
| Dimmer | Electronic 0-100% |
| Movement Range | 540°/210° pan/tilt |
| Lens rotation function in both directions | |
| Ability to independently control each diode | |
| Operating Modes | DMX512/ArtNet/sACN/RDM/Manual |
| DMX Channels | 28/35/40/99/252/322 |

Physical parameters

| | |
|-------------------------------|-------------------------|
| Protection Level | IP65 |
| Dimensions | 514x430x280mm |
| Weight | 23 kg |
| Power Supply Sockets Standard | PowerCon TRUE1 (IN/OUT) |
| DMX Sockets / Art-Net Sockets | 3-pin / RJ45 |





X-DOT
WASH



Protection Rating
IP 65



Light source
7x60W + 28x1W



Effect
Dot Glow

X-Dot Wash

Brighter X-Dot Wash is a powerful, compact, versatile moving head, with 7x60W RGBL LED's, providing High Cri in very wide range of colour temperatures, Extraordinary Dot Glow Effect for pixel mapping show, and precisely designed zoom, for wash and beam use.

All the features listed above in light, handy IP65 housing.

Electrical Parameters:

| | |
|---------------------------------|--|
| Maximum Power Consumption | 520W |
| Light Source | 7x 60W 4-in-1 RGBL LED + 28x 1W RGB Dot Glow LED |
| Estimated Light Source Lifespan | 50 000h |
| Power Supply Voltage | 100-240V, 50/60Hz |

Features and Functions:

| | |
|---|---|
| Total Lumen output | 9200lm |
| LUX | 95000@3m (Zoom Narrow RGBL), 1800@3m (Zoom Wide RGBL) |
| CRI | >80Ra (2000K-8000K) |
| Colour mixing | RGBL |
| Zoom | 3.5°-45° |
| Dimmer | Electronic 0-100% |
| Movement Range | 540°/210° pan/tilt |
| Lens rotation function in both directions | |
| Ability to independently control each diode | |
| Operating Modes | DMX512/ArtNet/sACN/RDM/Manual |
| DMX Channels | 28/35/51/107/128 |

Physical parameters

| | |
|-------------------------------|-------------------------|
| Protection Level | IP65 |
| Dimensions | 456x310x263mm |
| Weight | 12.35 kg |
| Power Supply Sockets Standard | PowerCon TRUE1 (IN/OUT) |
| DMX Sockets / Art-Net Sockets | 3-pin / RJ45 |



NEW

X-PROFILE IP



 Protection Rating
IP 65

 Effect
4 framing blades

 Light source
800W LED

X-Profile IP

Brighter X-Profile IP is an extremely bright, professional, profile moving head. Based on 800W LED engine, could be used as beam, spot, wash and profile. 2 gobo wheels, prism, animation disk, frost filter, linear CTO filter, HI-CRI filter, 4 electronic framing blades, silent operation mode and CMY colour mixing provides everything you need wherever you need it.

All the features listed above, closed in the slim, elegant IP65 housing.

Electrical Parameters:

| | |
|---------------------------------|-------------------|
| Maximum Power Consumption | 850W |
| Light Source | 800W LED |
| Estimated Light Source Lifespan | 50 000h |
| Power Supply Voltage | 100-240V, 50/60Hz |

Features and Functions:

| | |
|--|----------------------------------|
| Colour mixing | CMY |
| CRI (HI-CRI filter included) | >70Ra (>90Ra with HI-CRI filter) |
| CTO | 3000K-8000K |
| Zoom | 6°-50° |
| Dimmer | Electronic 0-100% |
| Movement Range | 540°/270° pan/tilt |
| 4- blade framing system with +/-45° rotation | |
| Gobo wheels | 8 rotating and 11 static effects |
| Animation Disk / Frost Filter | Yes / Yes |
| Iris | Mechanical |
| Prism | 3-facet circular |
| Operating Modes | DMX512/ArtNet/sACN/RDM/Manual |
| Strobe | 1-25 Hz |

Physical parameters

| | |
|-------------------------------|-------------------------|
| Protection Level | IP65 |
| Dimensions | 405x310x760mm |
| Weight | 37 kg |
| Power Supply Sockets Standard | PowerCon TRUE1 (IN/OUT) |
| DMX Sockets / Art-Net Sockets | 3-pin / RJ45 |





SMART
PROFILE
600



Smart Profile 600 PRO

Brighter Smart Profile 600 Pro is an extremely bright, professional, profile moving head. Based on 600W LED engine, could be used as beam, spot, wash and profile. 2 gobo wheels, prism, animation disk, 2 independent frost filters, linear CTO filter, HI-CRI filter, 4 electronic framing blades, silent operation mode and CMY colour mixing provides everything you need wherever you need it.

All the features listed above, closed in the slim, elegant housing.

Electrical Parameters:

| | |
|---------------------------------|-------------------|
| Maximum Power Consumption | 650W |
| Light Source | 600WLED |
| Estimated Light Source Lifespan | 50 000h |
| Power Supply Voltage | 100-240V, 50/60Hz |

Features and Functions:

| | |
|---|------------------------------------|
| Colour mixing | CMY |
| CRI (HI-CRI filter included) | >70Ra (>90Ra with HI-CRI filter) |
| CTO | 3000K-8000K |
| Zoom | 6°-50° |
| Dimmer | Electronic 0-100% |
| Movement Range | 540°/270° pan/tilt |
| 4-blade framing system with +/-45° rotation | |
| Gobo wheels | 8 rotating and 11 static effects |
| Animation Disk / Frost Filter | Yes / 2 independents frost filters |
| Iris | Mechanical |
| Prism | 3-facet circular |
| Operating Modes | DMX512/ArtNet/sACN/RDM/Manual |
| Strobe | 1-25 Hz |

Physical parameters

| | |
|-------------------------------|-------------------------|
| Protection Level | IP20 |
| Dimensions | 400x300x700mm |
| Weight | 28 kg |
| Power Supply Sockets Standard | PowerCon TRUE1 (IN/OUT) |
| DMX Sockets / Art-Net Sockets | 3-pin / RJ45 |





 Light source
300W LED

 Colour mixing
CMY

 CTO disk
Linear

Smart Hybrid 300 PRO

A Hybrid LED moving head closed in compact housing.

The fixture is based on 300W LED source and equipped with CMY colour mixing, 9 static and 7 rotating gobos, 8-facet prism and linear CTO filter. All these features allow you to create amazing lighting effects, while maintaining small dimensions.

To meet user requirements, Smart Hybrid 300 Pro is equipped with built-in Art-Net/sACN.

Electrical Parameters:

| | |
|---------------------------------|-------------------|
| Maximum Power Consumption | 320W |
| Light Source | 300W LED |
| Estimated Light Source Lifespan | 50 000h |
| Power Supply Voltage | 100-240V, 50/60Hz |

Features and Functions:

| | |
|-----------------|---|
| CRI | >75 |
| Colour mixing | CMY |
| Zoom | 3°-30° |
| Dimmer | Electronic 0-100% |
| Movement Range | 540°/270° pan/tilt |
| Operating Modes | DMX512, ArtNet, sACN, RDM, Auto, Manual |
| DMX Channels | 17 |
| CTO | 2800K-7800K |
| Gobo wheels | 7 rotating and 9 static effects |
| Prism | 8-facet |
| Frost Filter | Yes |
| Strobo | 1-25 Hz |

Physical parameters

| | |
|-------------------------------|-------------------------|
| Protection Level | IP20 |
| Dimensions | 300x205x542mm |
| Weight | 13,7 kg |
| Power Supply Sockets Standard | PowerCon TRUE1 (IN/OUT) |
| DMX Sockets / Art-Net Sockets | 3-pin / RJ45 |





SMART HYBRID 480 PRO

 Light source
480W LED

 Colour mixing
CMY

 CTO disk
Linear

Smart Hybrid 480 PRO

Brighter Smart Hybrid 480 Pro is an extremely bright, professional, hybrid moving head. Based on 480W LED source, could be used as beam, spot or wash.

2 gobo wheels, two prisms, frost, linear CTO filter and CMY colour mixing provide all what you need on the stage. Everything packed in the slim, elegant housing.

Electrical Parameters:

| | |
|---------------------------------|-------------------|
| Maximum Power Consumption | 500W |
| Light Source | 480WLED |
| Estimated Light Source Lifespan | 50 000h |
| Power Supply Voltage | 100-240V, 50/60Hz |

Features and Functions:

| | |
|--------------------|----------------------------------|
| Total Lumen output | 57000lm |
| CRI | >75 |
| Colour mixing | CMY |
| Zoom | 4°-40° |
| Dimmer | Electronic 0-100% |
| Movement Range | 540°/270° pan/tilt |
| Operating Modes | DMX512, RDM, Auto, Manual |
| DMX Channels | 22/26 |
| CTO | 3000K-8500K |
| Gobo wheels | 8 rotating and 11 static effects |
| Prism | 8-facet linear and 5-facet |
| Frost Filter | Yes |
| Strobo | 1-30 Hz |

Physical parameters

| | |
|-------------------------------|-------------------------|
| Protection Level | IP20 |
| Dimensions | 360x290x660mm |
| Weight | 22,5 kg |
| Power Supply Sockets Standard | PowerCon TRUE1 (IN/OUT) |
| DMX Sockets | 3-pin |





SMART HYBRID 280 PRO

 Light source
280W LED

 Zoom
3-30°

 Compact &
lightweight

Smart Hybrid 280 PRO

Brighter Smart Hybrid 280 PRO is a compact, versatile moving head with 280W LED light source.

This luminaire could be a 3-degree beam with a lot of effect thanks to 2 gobo wheels, 30-degree spot or even much more wide, when using a prism. With its Frost filter it could be used also as a very bright wash. All these features in lightweight, handy housing.

Electrical Parameters:

| | |
|---------------------------------|-------------------|
| Maximum Power Consumption | 300W |
| Light Source | 280W LED |
| Estimated Light Source Lifespan | 50 000h |
| Power Supply Voltage | 100-240V, 50/60Hz |

Features and Functions:

| | |
|--------------------|--|
| Total Lumen output | 21000lm |
| LUX | 26000@3m (zoom narrow), 1800 @3m (zoom wide) |
| Colour mixing | 9 colors + white |
| Zoom | 9°-30° (3.5° in BEAM mode) |
| Dimmer | Electronic 0-100% |
| Movement Range | 540°/270° pan/tilt |
| Operating Modes | DMX512, Auto, Master/Slave |
| DMX Channels | 17 |
| Gobo wheels | 7 rotating and 9 static effects |
| Prism | 3-facet |
| Frost Filter | Yes |
| Strobo | 1-25 Hz |

Physical parameters

| | |
|-------------------------------|-------------------------|
| Protection Level | IP20 |
| Dimensions | 300x205x542mm |
| Weight | 13 kg |
| Power Supply Sockets Standard | PowerCon TRUE1 (IN/OUT) |
| DMX Sockets | 3-pin |




Eye 500 PRO HI-CRI



 Light source
19x25W RGBWW LED

 Zoom
10-60°

 Pixel mapping
3 sections

Eye 500 PRO HI-CRI

Brighter Eye 500 PRO HI-CRI is a powerful and compact wash, with extended functionality by motorized zoom and independent LED RING control. These features combined with powerful 25W RGBWW LED chips, create a very interesting device that successfully copes even on large stages.

Moreover, white LED's are warm white, providing high quality light with CRI greater than 90Ra.

Electrical Parameters:

| | |
|---------------------------------|--------------------------|
| Maximum Power Consumption | 500W |
| Light Source | 19x 25W 4-in-1 RGBWW LED |
| Estimated Light Source Lifespan | 50 000h |
| Power Supply Voltage | 100-240V, 50/60Hz |

Features and Functions:

| | |
|--------------------|---|
| Total Lumen output | 31800lm |
| LUX | 26500@3m(RGBWW, Zoom Narrow) 2100@3m (RGBWW, Zoom Wide) |
| CRI | >90Ra |
| Zoom | 10°-60 |
| Dimmer | Electronic 0-100% |
| Movement Range | 540°/270° pan/tilt |
| Operating Modes | DMX512, Sound Active, Master/Slave |
| DMX Channels | 14/27 |

Physical parameters

| | |
|-------------------------------|-------------------|
| Protection Level | IP20 |
| Dimensions | 350x200x400mm |
| Weight | 9,5 kg |
| Power Supply Sockets Standard | PowerCon (IN/OUT) |
| DMX Sockets | 3-pin and 5-pin |






Eye 1500 Pro

 Light source
37x25W RGBW LED

 Zoom
10-60°

 Pixel mapping
3 sections

Eye 1500 PRO

Brighter Eye 1500 PRO is a powerful Wash. Thanks to the independent control of the LED rings and the motorized zoom mechanism makes it a versatile and universal device.

In combination with powerful, 25W RGBW LED chips, the device becomes a very interesting proposition for large concert and theatre stages.

Electrical Parameters:

| | |
|---------------------------------|-------------------------|
| Maximum Power Consumption | 850W |
| Light Source | 37x 25W 4-in-1 RGBW LED |
| Estimated Light Source Lifespan | 50 000h |
| Power Supply Voltage | 100-240V, 50/60Hz |

Features and Functions:

| | |
|--------------------|--|
| Total Lumen output | 49800lm |
| LUX | 41500@3m(RGBW, Zoom Narrow) 3800@3m(RGBW, Zoom Wide) |
| Zoom | 10°-60° |
| Dimmer | Electronic 0-100% |
| Movement Range | 540°/270° pan/tilt |
| Operating Modes | DMX512, Sound Active, Master/Slave |
| DMX Channels | 19/36 |

Physical parameters

| | |
|-------------------------------|-------------------|
| Protection Level | IP20 |
| Dimensions | 400x200x465mm |
| Weight | 17 kg |
| Power Supply Sockets Standard | PowerCon (IN/OUT) |
| DMX Sockets | 3-pin and 5-pin |





Effects & Architectural

Our effect and architectural lighting is a versatile solution for creating atmosphere and highlighting detail. We offer a wide range of possibilities - from dynamic stage effects to subtle and precise architectural lighting.

Robust construction and a high IP65 rating are key features of this highly regarded category of luminaire, ensuring reliability and high efficiency in even the harshest conditions.

Due to its popularity, this product line continues to be the most developed within the Brighter Lighting brand.

The range now includes high end floodlights, strobes, pairs and LED strips.

brighter[®]



Protection Rating
IP 65



Movement
180° tilt



Pixel Mapping
120 sections

X-Strobe IP

The Brighter X-Strobe IP is the perfect solution, combining a powerful strobe with an effective pixel-mapping light. The X-Strobe IP also features movement with a 180° tilt range, allowing you to create amazing lighting effects. The user has access to 120 independently controlled sections (24xRGBWW and 96xCW), and the built-in Art-Net/sACN.

In order to adapt the device to harsh working conditions, it has been designed to maintain the protection rating at IP65.

Electrical Parameters

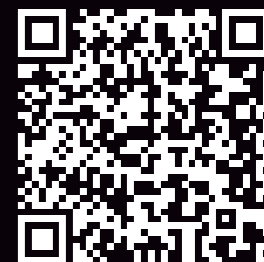
| | |
|---------------------------------|------------------------------------|
| Maximum Power Consumption | 1900 W |
| Light Source | 864x1,6W RGBWW LED + 576x1W CW LED |
| Estimated Light Source Lifespan | 30 000h |
| Power Supply Voltage | 100-240V, 50/60Hz |

Features and Functions

| | |
|---|------------------------------------|
| Lux | 3420@3m (RGBWW+CW) |
| Beam Angle | 140° |
| Operating Modes | DMX512, Art-Net, sACN, RDM, Manual |
| Dimmer | Electronic 0-100% |
| Movement Range | 180° tilt |
| Ability to independently control 120 sections | (24xRGBWW+96CW) |
| DMX Channels | 3/4/14/22/27/200 |

Physical parameters

| | |
|-------------------------------|-------------------------|
| Protection Level | IP65 |
| Dimensions | 493x175x200mm |
| Weight | 14 kg |
| Power Supply Sockets Standard | PowerCon TRUE1 (IN/OUT) |
| DMX Sockets / Art-Net Sockets | 3-pin / RJ45 |





Protection Rating
IP 65



Art-Net
Ethercon



Pixel Mapping
60 sections

Pixel Strobe IP

The Brighter Pixel Strobe IP is a combination of a very strong, energy-saving strobe and an effective pixel mapping luminaire.

The user has 60 sections controlled independently at his disposal, and the diodes with a total power of 1850W allow you to achieve up to 230 000 lumens. In order to adapt the device to harsh working conditions, it has been designed to maintain the protection rating at IP65.

Electrical Parameters

| | |
|---------------------------------|---------------------------------------|
| Maximum Power Consumption | 930W/1850W (Static/Strobe) |
| Light Source | 480x1,5W RGB LED + 480x0,5W White LED |
| Estimated Light Source Lifespan | 30 000h |
| Power Supply Voltage | 100-240V, 50/60Hz |

Features and Functions

| | |
|--|---------------------------------------|
| Total lumen output | 230 000 lm (strobe) 50 638lm (static) |
| Lux | 6335@3m (strobe), 3200@3m (static) |
| Beam Angle | 120° |
| Operating Modes | DMX512, Art-Net, RDM, sACN, Manual |
| Dimmer | Electronic 0-100% |
| Movement Range | 180° tilt |
| 4 different brightness control curves | |
| Ability to independently control 60 sections | |
| DMX Channels | 4/4/12/15/44/244 |

Physical parameters

| | |
|-------------------------------|-------------------------|
| Protection Level | IP65 |
| Dimensions | 520x290x200mm |
| Weight | 14 kg |
| Power Supply Sockets Standard | PowerCon TRUE1 (IN/OUT) |
| DMX Sockets / Art-Net Sockets | 3-pin / RJ45 |





 Protection Rating
IP 65

 Light source
COB LED

 Colour mixing
RGBLAC

Lumo IP

A modern replacement for the classic blinder, based on the COB 540W LED. Thanks to the LED technology used, this fixture has a very long service life, which can be a big problem in the case of classic incandescent blinders.

Lumo IP also has an LED ring that can be used to create an eye-candy effect. All the features listed above closed in light IP65 housing.

Electrical Parameters

| | |
|---------------------------------|--------------------------------------|
| Maximum Power Consumption | 350W |
| Light Source | 6x90W COB LED RGLAC +32x0,2W LED RGB |
| Estimated Light Source Lifespan | 50 000h |
| Power Supply Voltage | 100-240V, 50/60Hz |

Features and Functions

| | |
|--|---|
| Beam Angle | 55° |
| Operating Modes | DMX512, RDM, Master/Slave, Sound Active |
| Dimmer | Electronic 0-100% |
| Colour temperature | 1800K-8500K |
| Possibility to connect devices to each other | |
| DMX Channels | 1/2/3/6/9/13/17/19/23 |

Physical parameters

| | |
|-------------------------------|-------------------------|
| Protection Level | IP65 |
| Dimensions | 235x249x193mm |
| Weight | 3,4kg |
| Power Supply Sockets Standard | PowerCon TRUE1 (IN/OUT) |
| DMX Sockets | 3-pin |





Protection Rating
IP 65



Light source
18x25W RGBL LED



Pixel Mapping
18 sections

X-Bar IP

Powerful LED Bar with innovative RGBL colour mixing, full pixel control and IP65 waterproof housing. Equipped with beam optics it will throw the light at a very long range. Beam angle can be adjusted by variety of different frost filters.

Silent cooling system will keep the device in safe conditions, without annoying anyone on the stage. Up to 500W of light for your show.

Electrical Parameters

| | |
|---------------------------------|-------------------|
| Maximum Power Consumption | 500W |
| Light Source | 18x25W RGBL LED |
| Estimated Light Source Lifespan | 50 000h |
| Power Supply Voltage | 100-240V, 50/60Hz |

Features and Functions

| | |
|---|-----------------------------------|
| Total lumen output | 7200lm |
| Lux | 30500@3m (6° RGBL) |
| Beam Angle | 6° + Frost Filters 10x60°/20°/45° |
| Operating Modes | DMX512/Art-Net/sACN/RDM/Manual |
| Ability to independently control each diode | |
| DMX Channels | 4/10/20/33/37/77 |
| CRI | >80Ra (2000K-8000K) |

Physical parameters

| | |
|-------------------------------|-------------------------|
| Protection Level | IP65 |
| Dimensions | 1000x210x85mm |
| Weight | 10,5 kg |
| Power Supply Sockets Standard | PowerCon TRUE1 (IN/OUT) |
| DMX Sockets / Art-Net Sockets | 3-pin / RJ45 |





Protection Rating
IP 65



DMX
Wireless



Accessories
Magnetic

Atom R+

This is an improved version of the best-selling Atom R illuminator. The device is equipped with 44 RGBW LEDs with a power of 10 W each. Atom R+ extends its capabilities with individual control of each of the 4 rows of LEDs. To meet the needs of universal use, apart from the standard 25° beam angle, a magnetically mounted diffusing filter can be attached to the device.

Atom R+ also has a built-in high-end wireless DMX receiver and a dimmer that allows you to control the brightness according to 6 curves. High resistance to weather conditions IP65 allows you to use the illuminator in all weather conditions. The set with the device includes diffusing filters, limiting wings and a stand.

Electrical Parameters

| | |
|---------------------------------|-------------------|
| Maximum Power Consumption | 450W |
| Light Source | 44x10W RGBW LED |
| Estimated Light Source Lifespan | 50 000h |
| Power Supply Voltage | 100-240V, 50/60Hz |

Features and Functions

| | |
|---|---------------------------------|
| Beam Angle | 25° + Frost filter 40°/55° |
| Operating Modes | DMX512, RDM, Auto, Master/Slave |
| Dimmer | Electronic 0-100% |
| 5 different brightness control curves | |
| Ability to independently control 4 sections | |
| DMX Channels | 4/10/22 |

Physical parameters

| | |
|-------------------------------|-------------------|
| Protection Level | IP65 |
| Dimensions | 500x320x140mm |
| Weight | 9 kg |
| Power Supply Sockets Standard | PowerCon (IN/OUT) |
| DMX Sockets | 3-pin |





Atom S

A waterproof illuminator with popular and valued characteristics, based on an LED light source. The device is equipped with 24 RGBW diodes with a power of 20W each.

Thanks to its high power and small housing, this device will work not only on stages, but also as lighting for buildings and large spaces. Device also has W-DMX receiver, magnetically mounted diffusing filter and limiting wings. All of the features listed above closed in light, handy IP65 housing.

Electrical Parameters

| | |
|---------------------------------|-------------------|
| Maximum Power Consumption | 480W |
| Light Source | 24x20W RGBW LED |
| Estimated Light Source Lifespan | 50 000h |
| Power Supply Voltage | 100-240V, 50/60Hz |

Features and Functions

| | |
|---------------------------------------|---------------------------------|
| Total Lumen Output | 53320lm |
| Lux | 13100@3m (RGBW) |
| Beam Angle | 25° + Frost filter 40°/55° |
| Operating Modes | DMX512, Auto, Master/Slave, RDM |
| Dimmer | Electronic 0-100% |
| Wireless DMX | |
| Movement Range | 170° tilt |
| 5 different brightness control curves | |

Physical parameters

| | |
|-------------------------------|-------------------------|
| Protection Level | IP65 |
| Dimensions | 420x140x265mm |
| Weight | 6,6kg |
| Power Supply Sockets Standard | PowerCon TRUE1 (IN/OUT) |
| DMX Sockets | 3-pin |





Atom S+

A waterproof illuminator with popular and valued characteristics, based on an LED light source. The device is equipped with 24 RGBALC diodes with a power of 20W each.

Thanks to its RGBALC colour mixing, silent operation and small housing, this device will work not only on stages, but also as theatrical lighting. Device also has W-DMX receiver, magnetically mounted diffusing filter and limiting wings. All of the features listed above closed in light, handy IP65 housing.

Electrical Parameters

| | |
|---------------------------------|-------------------|
| Maximum Power Consumption | 480W |
| Light Source | 24x20W RGBLAC LED |
| Estimated Light Source Lifespan | 50 000h |
| Power Supply Voltage | 100-240V, 50/60Hz |

Features and Functions

| | |
|---------------------------------------|---------------------------------|
| Total Lumen Output | 53320lm |
| Lux | 9660@3m (RGBLAC) |
| Beam Angle | 25° + Frost filter 40°/55° |
| Operating Modes | DMX512, Auto, Master/Slave, RDM |
| Dimmer | Electronic 0-100% |
| Wireless DMX | |
| Movement Range | 170° tilt |
| 5 different brightness control curves | |
| CRI | >95Ra |

Physical parameters

| | |
|-------------------------------|-------------------------|
| Protection Level | IP65 |
| Dimensions | 420x140x265mm |
| Weight | 6,6kg |
| Power Supply Sockets Standard | PowerCon TRUE1 (IN/OUT) |
| DMX Sockets | 3-pin |





Protection Rating
IP 65



DMX
Wireless



Accessories
Magnetic

Atom T

A powerful, waterproof illuminator with popular and valued characteristics, based on an LED light source. The device is equipped with 48 RGBW diodes with a power of 20W each. Thanks to its high power and small weight, this device will work not only on stages, but also as lighting for buildings and large spaces.

Device also has W-DMX receiver, magnetically mounted diffusing filter and limiting wings. All of the features listed above closed in light, handy IP65 housing.

Electrical Parameters

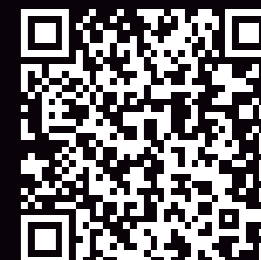
| | |
|---------------------------------|-------------------|
| Maximum Power Consumption | 1000W |
| Light Source | 48x20W RGBW LED |
| Estimated Light Source Lifespan | 50 000h |
| Power Supply Voltage | 100-240V, 50/60Hz |

Features and Functions

| | |
|---------------------------------------|---------------------------------|
| Total Lumen Output | 77991lm |
| Lux | 42500@3m (RGBW) |
| Beam Angle | 25° + Frost filter 40°/55° |
| Operating Modes | DMX512, Auto, Master/Slave, RDM |
| Dimmer | Electronic 0-100% |
| Wireless DMX | |
| Movement Range | 170° tilt |
| 5 different brightness control curves | |

Physical parameters

| | |
|-------------------------------|-------------------------|
| Protection Level | IP65 |
| Dimensions | 570x150x320mm |
| Weight | 10,6kg |
| Power Supply Sockets Standard | PowerCon TRUE1 (IN/OUT) |
| DMX Sockets | 3-pin |





Atom T+

A powerful, waterproof illuminator with popular and valued characteristics, based on an LED light source. The device is equipped with 48 RGBALC diodes with a power of 20W each.

Thanks to it's high power, RGBALC colour mixing and silent operation, this device will work not only on stages, but also as theatrical lighting. Device also has W-DMX receiver, magnetically mounted diffusing filter and limiting wings. All of the features listed above closed in light, handy IP65 housing.

Electrical Parameters

| | |
|---------------------------------|-------------------|
| Maximum Power Consumption | 1000W |
| Light Source | 48x20W RGBALC LED |
| Estimated Light Source Lifespan | 50 000h |
| Power Supply Voltage | 100-240V, 50/60Hz |

Features and Functions

| | |
|---------------------------------------|---------------------------------|
| Total Lumen Output | 77991lm |
| Lux | 19130@3m (RGBALC) |
| Beam Angle | 25° + Frost filter 40°/55° |
| Operating Modes | DMX512, Auto, Master/Slave, RDM |
| Dimmer | Electronic 0-100% |
| Wireless DMX | |
| Movement Range | 170° tilt |
| 5 different brightness control curves | |
| CRI | >95Ra |

Physical parameters

| | |
|-------------------------------|-------------------------|
| Protection Level | IP65 |
| Dimensions | 570x150x320mm |
| Weight | 10,6kg |
| Power Supply Sockets Standard | PowerCon TRUE1 (IN/OUT) |
| DMX Sockets | 3-pin |





PRO PAR
12 BTIP



Protection Rating
IP 65



Colour mixing
RGBWA+UV



Battery
Inbuilt

Pro Par 12 BTIP

Pro Par luminaire equipped with 12 RGBWAUV LED's, each of 12 watts with very long lifetime.

IP65 waterproof housing contains the lithium-ion battery, which provides up to 20 hours of constant work. This fixture has got a wireless dmx receiver as standard, and could be used with IR remote controller also. Passive cooling provides noiseless operation. Optional frost filter as standard.

Electrical Parameters

| | |
|---------------------------------|---------------------|
| Maximum Power Consumption | 150W |
| Light Source | 12x12W RGBWA+UV LED |
| Estimated Light Source Lifespan | 100 000h |
| Power Supply Voltage | 100-240V, 50/60Hz |

Features and Functions

| | |
|--------------------|--|
| Total Lumen Output | 3620lm |
| Lux | 1600@3m (RGBWA+UV 15°) |
| Beam Angle | 15° + Frost filter 40° |
| Operating Modes | DMX512, Auto, Master/Slave, Sound Active |
| Dimmer | Electronic 0-100% |
| Wireless DMX | |
| DMX Channels | 6/10 |
| Built-in battery | 222 Wh |

Physical parameters

| | |
|-------------------------------|-------------------------|
| Protection Level | IP65 |
| Dimensions | 290x290x330mm |
| Weight | 6,5 kg |
| Power Supply Sockets Standard | PowerCon TRUE1 (IN/OUT) |
| DMX Sockets | 3-pin |





PRO PAR
BTIP

Protection Rating
IP 65

Colour mixing
RGBWA+UV

Battery
Inbuilt

Pro Par 9 BTIP

Pro Par luminaire equipped with 9 RGBWAUV LED's, each of 12 watts with very long lifetime. IP65 waterproof housing contains the lithium-ion battery, which provides up to 20 hours of constant work.

This fixture has got a wireless dmx receiver as standard, and could be used with IR remote controller also. Passive cooling provides noiseless operation. Optional frost filter as standard.

Electrical Parameters

| | |
|---------------------------------|--------------------|
| Maximum Power Consumption | 130W |
| Light Source | 9x12W RGBWA+UV LED |
| Estimated Light Source Lifespan | 100 000h |
| Power Supply Voltage | 100-240V, 50/60Hz |

Features and Functions

| | |
|--------------------|----------------------------|
| Total Lumen Output | 3080lm |
| Lux | 1300@3m (RGBWA+UV 15°) |
| Beam Angle | 15° + Frost filter 40° |
| Operating Modes | DMX512, Auto, Master/Slave |
| Dimmer | Electronic 0-100% |
| Wireless DMX | |
| DMX Channels | 6/10 |
| Built-in battery | 165,5 Wh |

Physical parameters

| | |
|-------------------------------|-------------------------|
| Protection Level | IP65 |
| Dimensions | 220x270x260mm |
| Weight | 6 kg |
| Power Supply Sockets Standard | PowerCon TRUE1 (IN/OUT) |
| DMX Sockets | 3-pin |





 Protection Rating
IP 65

 Colour mixing
RGBWA+UV

 Operating modes
Noiseless

Pro Par 18 IP

The Pro Par type device is equipped with 18 multicoloured RGBWA + UV LEDs, 12W each, characterized by a long service life.

Pro Par 18IP has a water resistance class of IP65, which allows for safe operation in all conditions. The device is produced in 5 variants of the lighting angle.

The device is passively cooled and ensures absolutely silent operation.

Electrical Parameters

| | |
|---------------------------------|---------------------|
| Maximum Power Consumption | 216W |
| Light Source | 18x12W RGBWA+UV LED |
| Estimated Light Source Lifespan | 100 000h |
| Power Supply Voltage | 100-240V, 50/60Hz |

Features and Functions

| | |
|--------------------|--|
| Total Lumen Output | 6720lm |
| Lux | 1200@3m (RGBWA+UV 45°) |
| Beam Angle | 15°/25°/35°/45°/60° |
| Operating Modes | DMX512, Auto, Master/Slave, Sound Active |
| Dimmer | Electronic 0-100% |
| DMX Channels | 7/11 |

Physical parameters

| | |
|-------------------------------|-------------------|
| Protection Level | IP65 |
| Dimensions | 320x280x270mm |
| Weight | 9 kg |
| Power Supply Sockets Standard | PowerCon (IN/OUT) |
| DMX Sockets | 3-pin |



PRO PAR
12IP



Protection Rating
IP 65

Colour mixing
RGBWA+UV

Operating modes
Noiseless

Pro Par 12 IP

The Pro Par type device is equipped with 12 multicoloured RGBWA + UV LEDs, 12W each, characterized by a long service life.

Pro Par IP has a water resistance class of IP65, which allows for safe operation in all conditions. The device is produced in 3 variants of the lighting angle.

The device is passively cooled and ensures absolutely silent operation.

Electrical Parameters

| | |
|---------------------------------|---------------------|
| Maximum Power Consumption | 144W |
| Light Source | 12x12W RGBWA+UV LED |
| Estimated Light Source Lifespan | 100 000h |
| Power Supply Voltage | 100-240V, 50/60Hz |

Features and Functions

| | |
|--------------------|--|
| Total Lumen Output | 3920lm |
| Lux | 1700@3m (RGBWA+UV 15°) |
| Beam Angle | 15°/25°/35° |
| Operating Modes | DMX512, Auto, Master/Slave, Sound Active |
| Dimmer | Electronic 0-100% |
| DMX Channels | 7/11 |

Physical parameters

| | |
|-------------------------------|-------------------|
| Protection Level | IP65 |
| Dimensions | 220x270x260mm |
| Weight | 4,2 kg |
| Power Supply Sockets Standard | PowerCon (IN/OUT) |
| DMX Sockets | 3-pin |



Pro Bar
18 IP



Protection Rating
IP 65

Colour mixing
RGBWA+UV

Pixel Mapping
18 sections

Pro Bar 18 IP

The Pro Bar 18 IP will prove themselves in every application. They are equipped with 18W RGBWA+UV LEDs. Their main advantage is the ability to control each of the LEDs independently, which opens up huge effect possibilities.

Thanks to the high degree of protection IP65, the device can work without any obstacles in all weather conditions. Thanks to passive cooling, the work is completely silent. The device can be delivered with a frost filter and a mounting kit, which allows to get a wider beam angle.

Electrical Parameters

| | |
|---------------------------------|-------------------|
| Maximum Power Consumption | 330W |
| Light Source | 18x18W RGBWA+UV |
| Estimated Light Source Lifespan | 50 000h |
| Power Supply Voltage | 100-240V, 50/60Hz |

Features and Functions

| | |
|--------------------|---|
| Total Lumen Output | 7185lm |
| Lux | 1500@3m (RGBWA+UV, 25°) |
| Beam Angle | 25°/55° (FROST FILTER) |
| Operating Modes | DMX512, RDM, Auto, Master/Slave, Sound Active |
| Dimmer | Electronic 0-100% |
| DMX Channels | 11/29/37/108/119 |

Physical parameters

| | |
|-------------------------------|-------------------------|
| Protection Level | IP65 |
| Dimensions | 1000x170x130mm |
| Weight | 7,2kg |
| Power Supply Sockets Standard | PowerCon TRUE1 (IN/OUT) |
| DMX Sockets | 3-pin |





 Light source
Retro Lamp

 Light source
96x0.5W RGB LED

 Pixel Mapping
96 sections

Deco RGB

Retro style effect lamp. Based on the classic Osram HPL750 bulb, controlled by a built-in dimmer. In addition, it offers Aura type backlight which is based on 96 diodes 0.5W, and which have been divided into 32 sections.

It all adds up to a very universal luminaire that will work well in entertainment spaces, as well as in TV and photo studios, hotels and all places where it is desirable to create an appropriate vintage atmosphere.

Electrical Parameters

| | |
|---------------------------------|--|
| Maximum Power Consumption | 800W |
| Light Source | bulb 750W HPL Osram + 96x 0,5w RGB LED |
| Estimated Light Source Lifespan | 300h (Bulb) 50 000h (LED) |
| Power Supply Voltage | 100-240V, 50/60Hz |

Features and Functions

| | |
|--------------------|----------------------|
| Total Lumen Output | 16400lm |
| Lux | 161@3m |
| Beam Angle | 160° |
| Operating Modes | DMX512, Master/Slave |
| Dimmer | Electronic 0-100% |
| DMX Channels | 4/6/9 |

Physical parameters

| | |
|-------------------------------|-------------------|
| Protection Level | IP20 |
| Dimensions | 640x330x661mm |
| Weight | 7,5 kg |
| Power Supply Sockets Standard | PowerCon (IN/OUT) |
| DMX Sockets | 3-pin and 5-pin |





Theatrical devices

The use of LED sources for theatre equipment is a technology that redefines this area of the industry. Profile and Fresnel luminaires available in the offer give their users the identical or better lighting parameters than conventional devices, and also facilitate their use due to the possibility of digital control of most parameters, such as changing the lighting angle or colour temperature.

brighter[®]



PROFILE
300+



Cooling
Silent



Colour mixing
RGBALC



High CRI
>94Ra

Profile 300+

Brighter Profile 300+ is a high-class profile illuminator equipped with a 300W LED multicolour light source in COB technology, available in two variants of the lighting angle adjustment range: 15°-28° and 20°-45°. It achieves high light intensity parameters and superior colour mixing.

The Profile series is characterized by an advanced cooling system that allows for silent operation. The illuminator is made of durable and solid metal alloys, thanks to which it will work in difficult conditions for many years. The design of the device allows the replacement of optics without disassembling the part containing the light source

Electrical Parameters

| | |
|---------------------------------|---------------------|
| Maximum Power Consumption | 350W |
| Light Source | 300W RGBALC COB LED |
| Estimated Light Source Lifespan | 50 000h |
| Power Supply Voltage | 100-240V, 50/60Hz |

Features and Functions

| | |
|--------------------|--|
| Total Lumen Output | 38 300lm |
| Lux | 17200 @3M (Zoom Narrow, RGBALC) 7600 @3m (Zoom Wide, RGBALC) |
| Beam Angle | 15°-28°/20°-45° |
| Operating Modes | DMX512, Manual |
| Dimmer | Electronic 0-100% |
| CRI | >94Ra |
| DMX Channels | 1/6/12 |

Physical parameters

| | |
|-------------------------------|-------------------|
| Protection Level | IP20 |
| Dimensions | 790x315x320mm |
| Weight | 9,2 kg |
| Power Supply Sockets Standard | PowerCon (IN/OUT) |
| DMX Sockets | 3-pin and 5-pin |





Profile 200

Brighter Profile 200 is a high-class profile illuminator equipped with a 200 W LED light source in COB technology, available in two variants of the lighting angle adjustment range: 15°-28° and 20°-45°. It achieves high light intensity parameters at the level of 20000-24000lm.

The Profile series is characterized by an advanced cooling system that allows for silent operation. The illuminator is made of durable and solid metal alloys, thanks to which it will work in difficult conditions for many years. The design of the device allows the replacement of optics without disassembling the part containing the light source.

Electrical Parameters

| | |
|---------------------------------|-------------------|
| Maximum Power Consumption | 250W |
| Light Source | 200W COB LED |
| Estimated Light Source Lifespan | 50 000h |
| Power Supply Voltage | 100-240V, 50/60Hz |

Features and Functions

| | |
|--------------------|-------------------|
| Total Lumen Output | 20 000lm |
| Colour temperature | 3000K/5600K |
| Beam Angle | 15°-28°/20°-45° |
| Operating Modes | DMX512, Manual |
| Dimmer | Electronic 0-100% |
| CRI | >90Ra |
| DMX Channels | 1/2 |

Physical parameters

| | |
|-------------------------------|-------------------|
| Protection Level | IP20 |
| Dimensions | 790x315x320mm |
| Weight | 9,2 kg |
| Power Supply Sockets Standard | PowerCon (IN/OUT) |
| DMX Sockets | 3-pin and 5-pin |





FW 300+

Brighter FW300+ is a high-end Fresnel theatre illuminator with high power. Equipped with a 300W LED light source in COB technology, with electronic adjustment of the lighting angle in the range of 15°-55°. The device is equipped with multi-color RGBALC LED, which provides excellent colour mixing, also achieves very high brightness results.

The FW300+ also has an advanced cooling system that allows for quiet work. The illuminator is made of durable and solid metal alloys, thanks to which it will work in difficult conditions for many years.

Electrical Parameters

| | |
|---------------------------------|---------------------|
| Maximum Power Consumption | 350W |
| Light Source | 300W RGBALC COB LED |
| Estimated Light Source Lifespan | 50 000h |
| Power Supply Voltage | 100-240V, 50/60Hz |

Features and Functions

| | |
|--------------------|---|
| Total Lumen Output | 27 000lm |
| Lux | 10730@3m (Zoom Narrow, RGBALC), 1537@3m (Zoom Wide, RGBALC) |
| Zoom | 15°-55° |
| Operating Modes | DMX512, Manual |
| Dimmer | Electronic 0-100% |
| CRI | >94Ra |
| DMX Channels | 1/7/13 |

Physical parameters

| | |
|-------------------------------|-------------------|
| Protection Level | IP20 |
| Dimensions | 520x315x320mm |
| Weight | 8,4 kg |
| Power Supply Sockets Standard | PowerCon (IN/OUT) |
| DMX Sockets | 3-pin and 5-pin |





Cooling
Silent



Light source
300W LED



High CRI
>95Ra

FW 300

Brighter FW300 is a high-end Fresnel type theatre illuminator with high power. Equipped with a 300W LED light source in COB technology with electronic adjustment of the lighting angle in the range of 15°-55°. The device has an advanced cooling system that allows for quiet work.

The illuminator is made of durable and solid metal alloys, thanks to which it will work in difficult conditions for many years.

Electrical Parameters

| | |
|---------------------------------|-------------------|
| Maximum Power Consumption | 350W |
| Light Source | 300W COB LED |
| Estimated Light Source Lifespan | 50 000h |
| Power Supply Voltage | 100-240V, 50/60Hz |

Features and Functions

| | |
|--------------------|-------------------|
| Total Lumen Output | 30 000lm |
| Colour temperature | 3000K/5600K |
| Zoom | 15°-55° |
| Operating Modes | DMX512, Manual |
| Dimmer | Electronic 0-100% |
| CRI | >95Ra |
| DMX Channels | 2/3 |

Physical parameters

| | |
|-------------------------------|-------------------|
| Protection Level | IP20 |
| Dimensions | 520x315x320mm |
| Weight | 9,2 kg |
| Power Supply Sockets Standard | PowerCon (IN/OUT) |
| DMX Sockets | 3-pin and 5-pin |





FW 200

Brighter FW200 is a high-end Fresnel type theatre illuminator with high power. Equipped with a 200W LED light source in COB technology with electronic adjustment of the lighting angle in the range of 15°-55°. The device has an advanced cooling system that allows for quiet work.

The illuminator is made of durable and solid metal alloys, thanks to which it will work in difficult conditions for many years.

Electrical Parameters

| | |
|---------------------------------|-------------------|
| Maximum Power Consumption | 250W |
| Light Source | 200W COB LED |
| Estimated Light Source Lifespan | 50 000h |
| Power Supply Voltage | 100-240V, 50/60Hz |

Features and Functions

| | |
|--------------------|-------------------|
| Total Lumen Output | 20 000lm |
| Colour temperature | 3000K/5600K |
| Zoom | 15°-55° |
| Operating Modes | DMX512, Manual |
| Dimmer | Electronic 0-100% |
| CRI | >90Ra |
| DMX Channels | 2/3 |

Physical parameters

| | |
|-------------------------------|-------------------|
| Protection Level | IP20 |
| Dimensions | 520x315x320mm |
| Weight | 9,2 kg |
| Power Supply Sockets Standard | PowerCon (IN/OUT) |
| DMX Sockets | 3-pin and 5-pin |





FW 100

Brighter FW100 is a high-end Fresnel type theatre illuminator with high power. Equipped with a 100W LED light source in COB technology with manual adjustment of the lighting angle in the range of 15°-55°.

The illuminator is made of durable and solid metal alloys, thanks to which it will work in difficult conditions for many years.

Electrical Parameters

| | |
|---------------------------------|-------------------|
| Maximum Power Consumption | 150W |
| Light Source | 100W COB LED |
| Estimated Light Source Lifespan | 50 000h |
| Power Supply Voltage | 100-240V, 50/60Hz |

Features and Functions

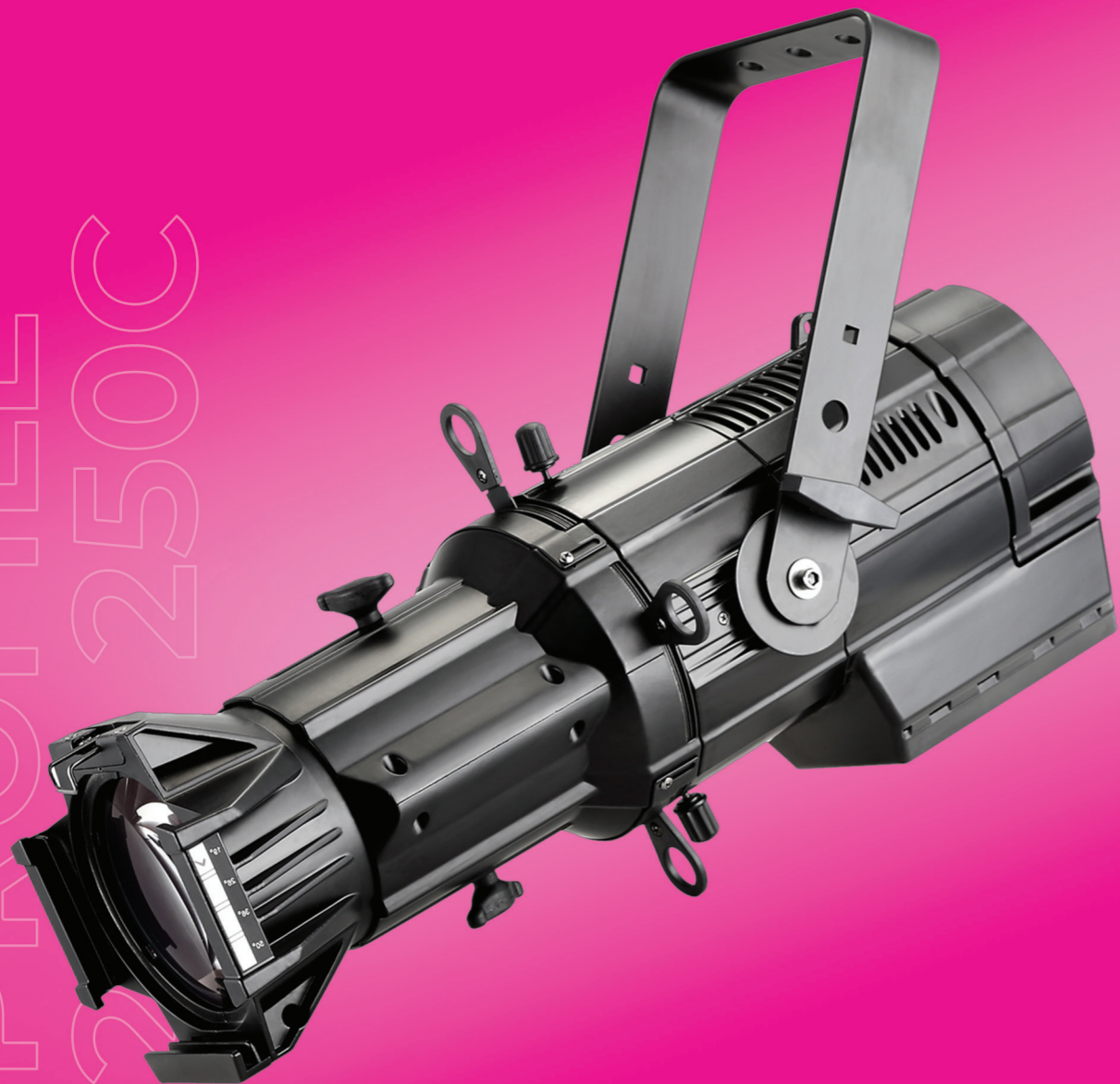
| | |
|--------------------|-------------------|
| Total Lumen Output | 10 000lm |
| Colour temperature | 3000K/5600K |
| Zoom | 15°-55° |
| Operating Modes | DMX512, Manual |
| Dimmer | Electronic 0-100% |
| CRI | >90Ra |
| DMX Channels | 1/2 |

Physical parameters

| | |
|-------------------------------|-------------------|
| Protection Level | IP20 |
| Dimensions | 425x315x320mm |
| Weight | 9,2 kg |
| Power Supply Sockets Standard | PowerCon (IN/OUT) |
| DMX Sockets | 3-pin and 5-pin |



PROFILE 250C



 Degree of resistance
IP 65

 Light source
250W LED

 High CRI
>90Ra

Profile 250 / 250C

Brighter Profile 250/250C is a high-class profile illuminator equipped with a 250 W LED light source in COB technology, also available in a variant with an RGBW source. It achieves high light intensity parameters of 28,000 lm.

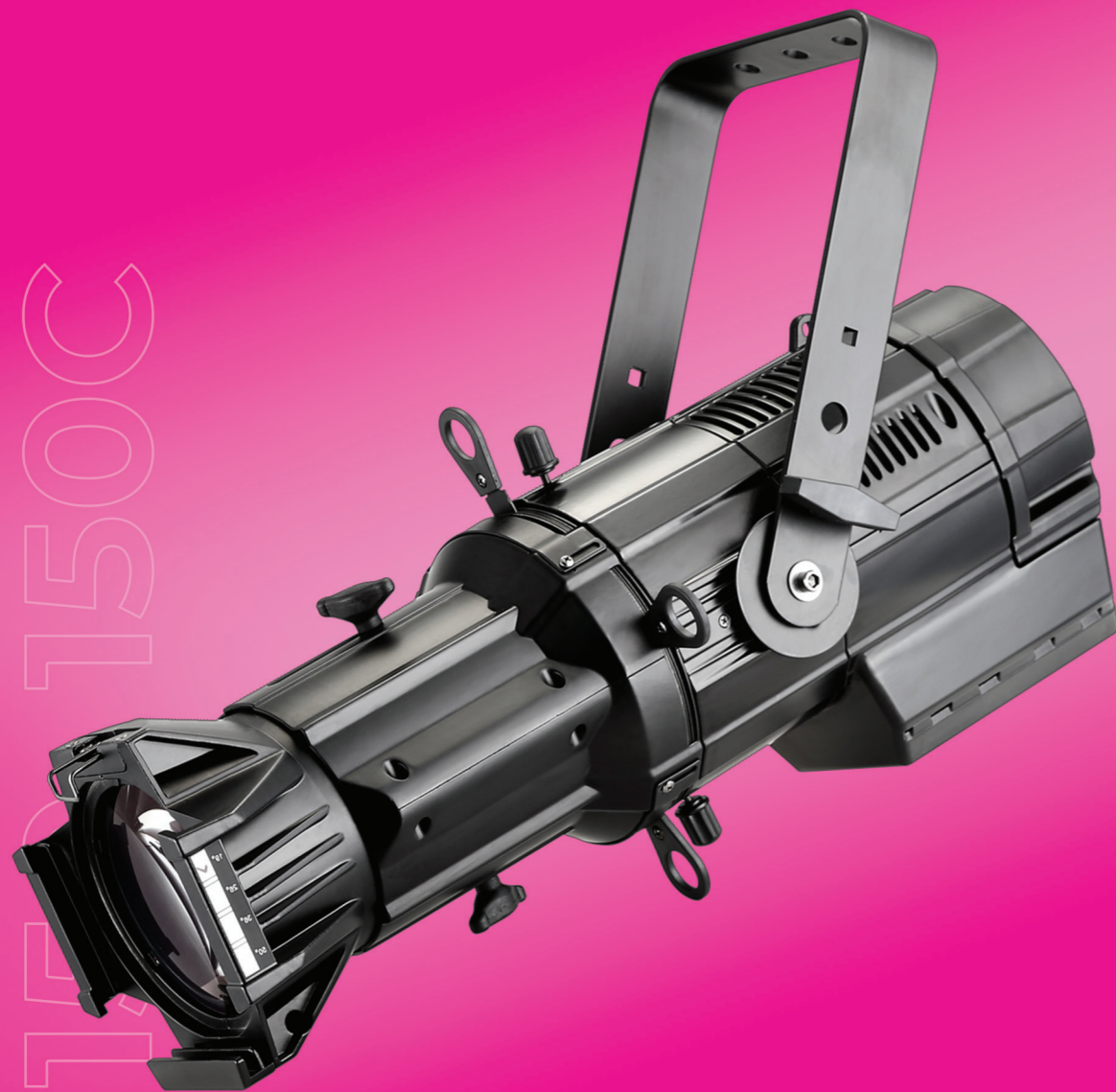
The device is available in several variants of the beam angle: 19°, 26°, 36°, 50°.

The illuminator is made of durable and solid metal alloys, thanks to which it will work in difficult conditions for many years. It is also characterized by a high degree of protection IP65.

| Electrical Parameters | PROFILE 250 | PROFILE 250C |
|---------------------------------|-------------------|-------------------|
| Maximum Power Consumption | 280W | |
| Light Source | 250W COB LED | 250W RGBW LED |
| Estimated Light Source Lifespan | 50 000h | |
| Power Supply Voltage | 100-240V, 50/60Hz | |
| Features and Functions | PROFILE 250 | PROFILE 250C |
| CRI | >85Ra, > 95Ra | >70Ra |
| Colour temperature | 3 200 K / 5 600 K | 2 700 K - 8 000 K |
| Beam angle | 19°/26°/36°/50° | |
| Dimmer | Electronic 0-100% | |
| DMX Channels | 1/2 | 8 |
| Operating Modes | DMX512, Manual | |
| Physical parameters | | |
| Protection Level | IP65 | |
| Dimensions | 740x320x320mm | |
| Weight | 10,1 kg | |
| Power Supply Sockets Standard | PowerCon (IN/OUT) | |
| DMX Sockets | 3-pin and 5-pin | |



PROFILE 150



Degree of resistance
IP 65



Light source
150W LED



High CRI
>90Ra

Profile 150 / 150C

Brighter Profile 150/150C is a high-class profile illuminator equipped with a 150 W LED light source in COB technology, also available in a variant with an RGBW source. It achieves high light intensity parameters of 15,000 lm.

The device is available in several variants of the beam angle: 19°, 26°, 36°, 50°. The illuminator is made of durable and solid metal alloys, thanks to which it will work in difficult conditions for many years.

It is also characterized by a high protection rating - IP65.

| Electrical Parameters | PROFILE 250 | PROFILE 250C |
|---------------------------------|-------------------|-------------------------|
| Maximum Power Consumption | 165W | |
| Light Source | 150W COB LED | 150W RGBW LED |
| Estimated Light Source Lifespan | 50 000h | |
| Power Supply Voltage | 100-240V, 50/60Hz | |
| Features and Functions | PROFILE 250 | PROFILE 250C |
| CRI | >85Ra, > 95Ra | >70Ra |
| Colour temperature | 3 200 K / 5 600 K | 2 700 K - 8 000 K |
| Beam angle | 19°/26°/36°/50° | |
| Dimmer | Electronic 0-100% | |
| DMX Channels | 1/2 | 8 |
| Operating Modes | DMX512, Manual | |
| Physical parameters | | |
| Protection Level | IP65 | |
| Dimensions | 740x320x320mm | |
| Weight | 10,1 kg | |
| Power Supply Sockets Standard | PowerCon (IN/OUT) | PowerCon True1 (IN/OUT) |
| DMX Sockets | 3-pin and 5-pin | |





DISTRIBUTION

Brighter Lighting Sp. z o.o.
ul. Warszawska 111
32-087 Bibice
POLAND

+48 12 307 41 43
sales@brighterlighting.pl

www.brighterlighting.pl

The manufacturer reserves the right to make technical changes

brighter[®]

brighterlighting.pl

